



## URINARY AND GENITAL TRACT INFECTIONS IN WOMEN AND THEIR IMPACT ON REPRODUCTIVE HEALTH

Tillayeva Zarina Zafarbekovna

[zarina\\_tillyayeva@tues.uz](mailto:zarina_tillyayeva@tues.uz)

<https://orcid.org/0009-0000-9394-5326>

Isakova Dilfuza Agamurotovna

Odiljonov Ozodbek Odiljonovich

[Odiljonnorkulov0@gmail.com](mailto:Odiljonnorkulov0@gmail.com)

<https://orcid.org/0009-0000-4932-4354>

Termez University of Economics and Service

Faculty of Medicine

### ABSTRACT

Urinary and genital tract infections are among the most common health problems affecting women worldwide. These infections, including urinary tract infections (UTIs), sexually transmitted infections (STIs), and vaginal infections, have significant implications for reproductive health. If untreated, they may lead to pelvic inflammatory disease (PID), infertility, ectopic pregnancy, and adverse pregnancy outcomes. This article examines the epidemiology, pathophysiology, clinical manifestations, and impact of urinary and genital tract infections on female reproductive health. The importance of early diagnosis, appropriate treatment, and preventive strategies is emphasized.

**Keywords:** urinary tract infections, genital infections, reproductive health, infertility, PID, STIs

### INTRODUCTION

Urinary and genital tract infections are highly prevalent among women due to anatomical, physiological, and behavioral factors. According to the World Health Organization, millions of new cases of sexually transmitted infections occur annually, many of which affect women of reproductive age.

Common infections include:

- Urinary Tract Infection
- Chlamydia Infection
- Gonorrhea
- Bacterial Vaginosis
- Candidiasis

These infections may disrupt the normal reproductive environment, impair fertility, and increase the risk of complications during pregnancy.

### MATERIALS AND METHODS

This study is based on a narrative review of scientific literature from PubMed, Scopus, and Web of Science.

#### **Inclusion Criteria:**

- Studies published between 2010 and 2024
- Women of reproductive age
- Studies focusing on infections and reproductive outcomes

#### **Diagnostic Methods:**

- Urinalysis and urine culture
- Vaginal swab and microscopy
- PCR testing for STIs

## RESULTS

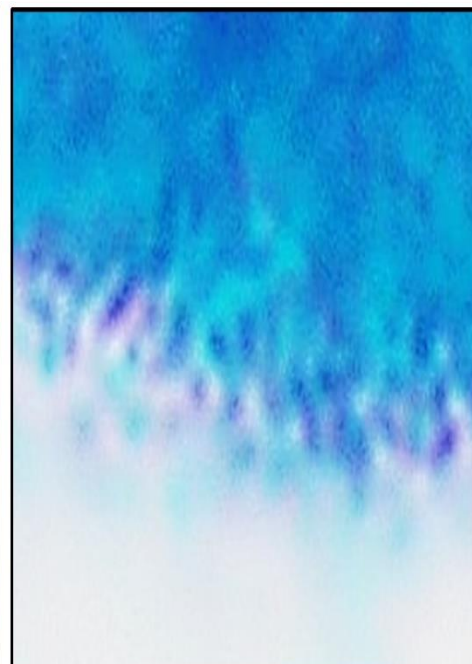
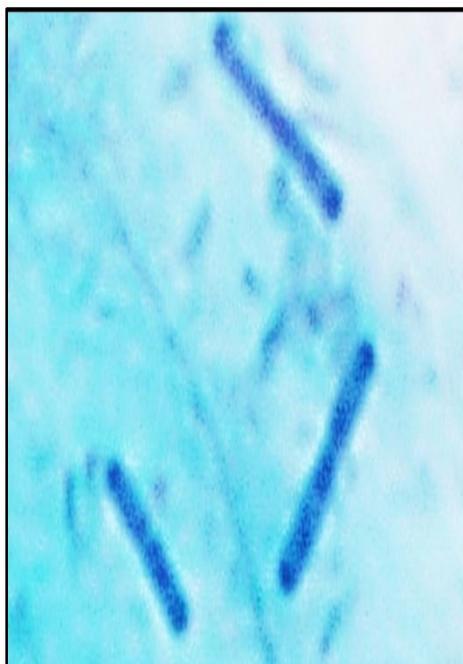
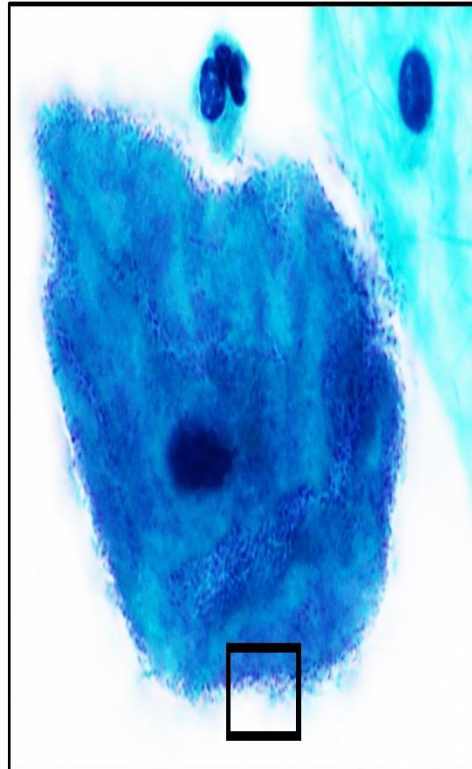
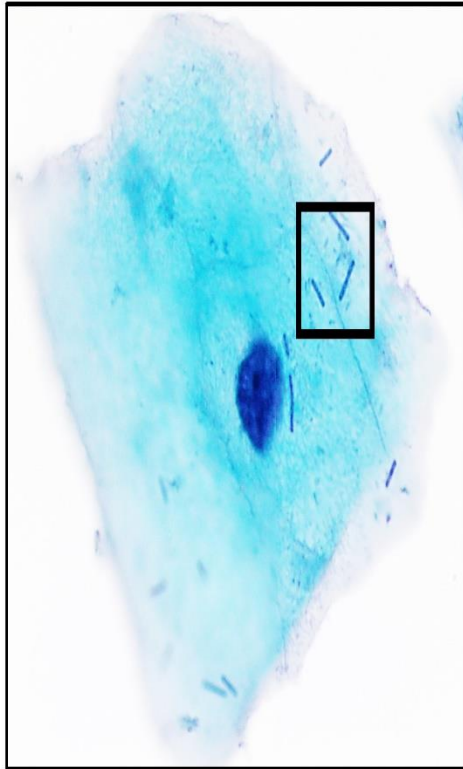
### 1. Epidemiology of Infections in Women

Urinary and genital infections are highly prevalent:

- UTIs affect up to 50–60% of women during their lifetime
- STIs remain widespread globally
- Vaginal infections are among the most common gynecological complaints

Normal vaginal flora

Bacterial vaginosis



## 2. Pathophysiology

### a. Urinary Tract Infections (UTIs)

UTIs are commonly caused by ascending bacteria, especially *E. coli*. Female anatomy (short urethra) predisposes women to infection.

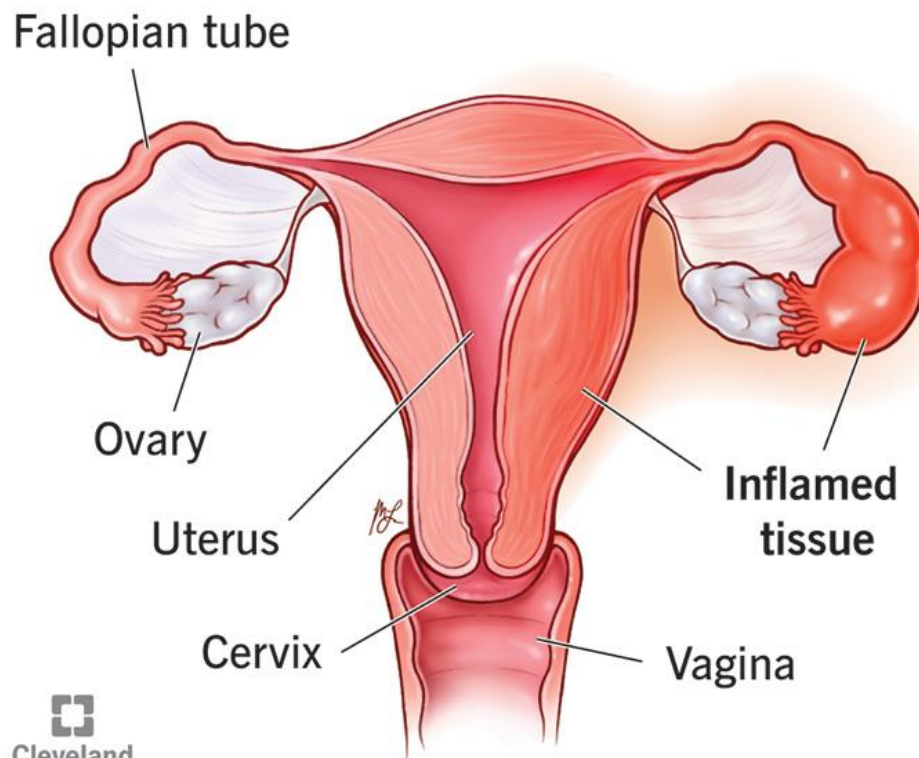
### b. Sexually Transmitted Infections (STIs)

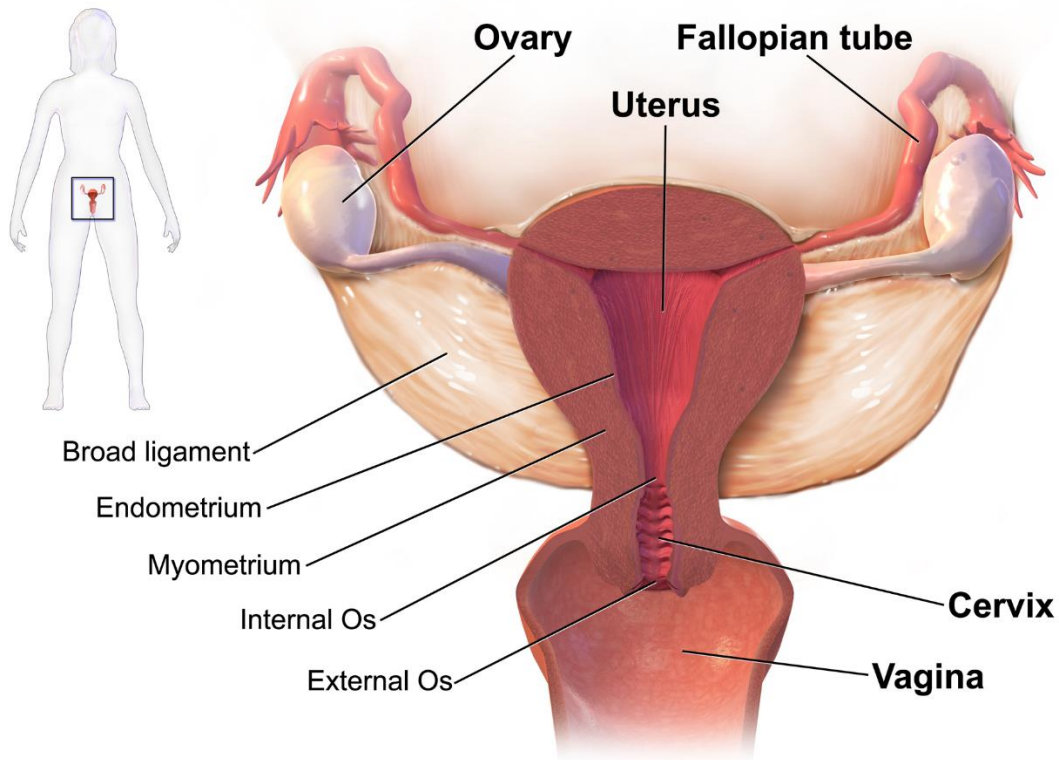
Pathogens such as Chlamydia Infection and Gonorrhea infect the cervix and ascend to the upper reproductive tract.

### c. Vaginal Infections

Disruption of normal vaginal flora leads to infections such as Bacterial Vaginosis and Candidiasis.

## Pelvic inflammatory disease (PID)





### 3. Impact on Reproductive Health

#### a. Pelvic Inflammatory Disease (PID)

Untreated STIs can lead to Pelvic Inflammatory Disease, causing inflammation of the uterus, fallopian tubes, and ovaries.

#### b. Infertility

Tubal damage from PID can result in infertility due to obstruction or scarring.

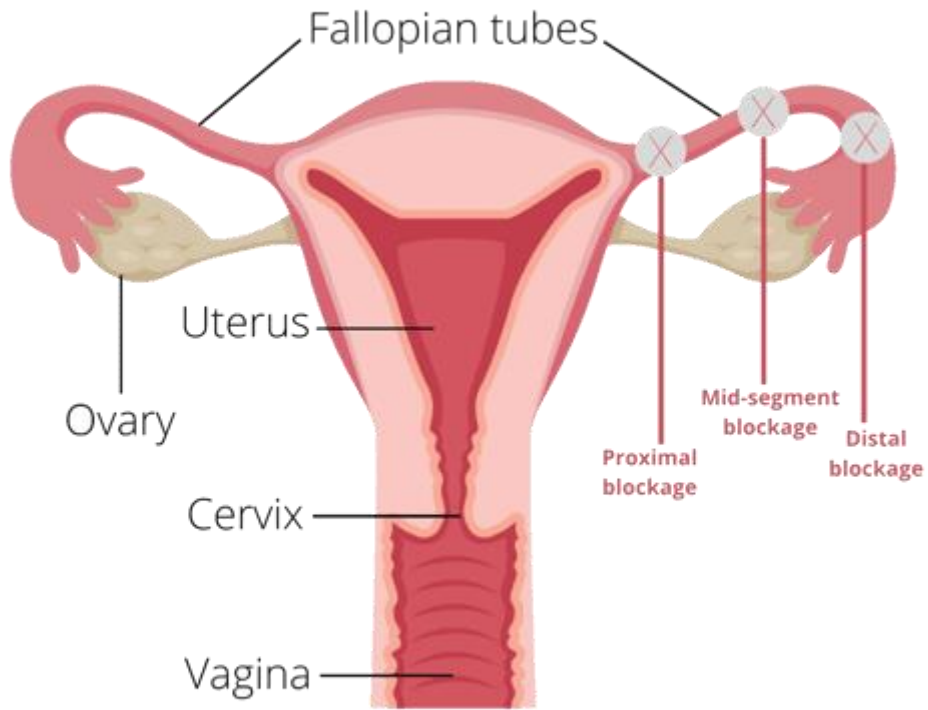
#### c. Ectopic Pregnancy

Damage to fallopian tubes increases the risk of ectopic pregnancy.

#### d. Pregnancy Complications

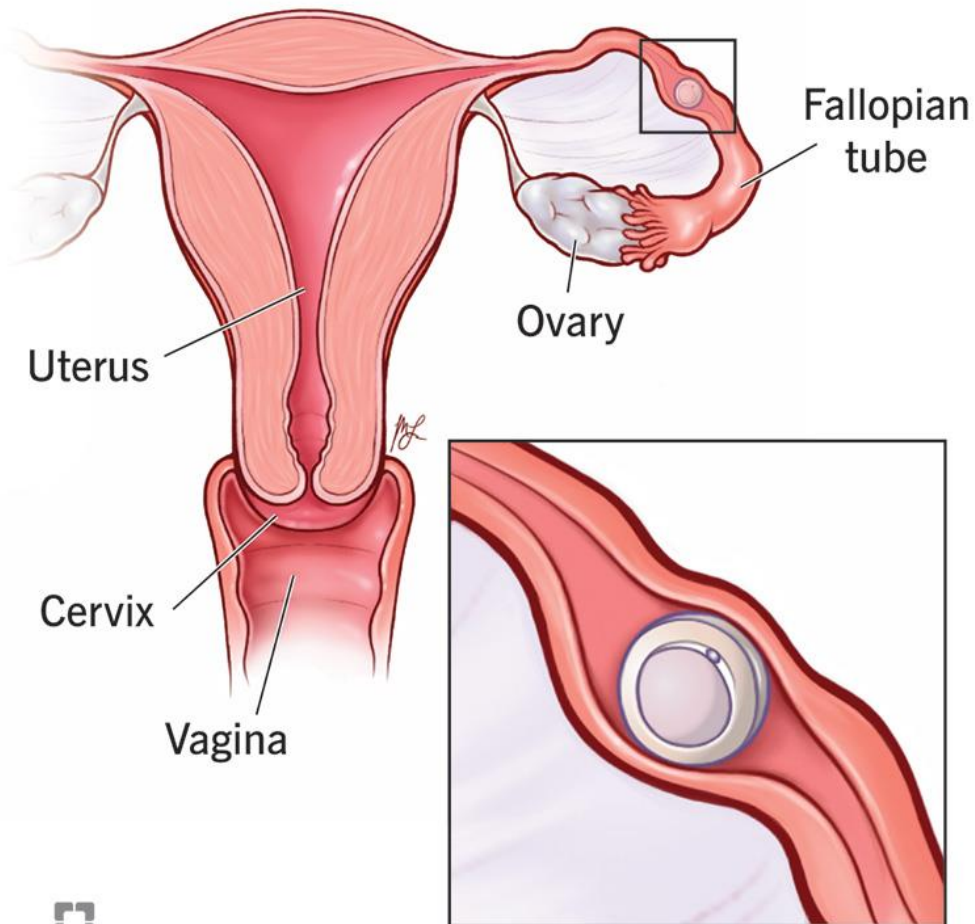
Infections during pregnancy may lead to:

- Preterm birth
- Low birth weight
- Neonatal infections



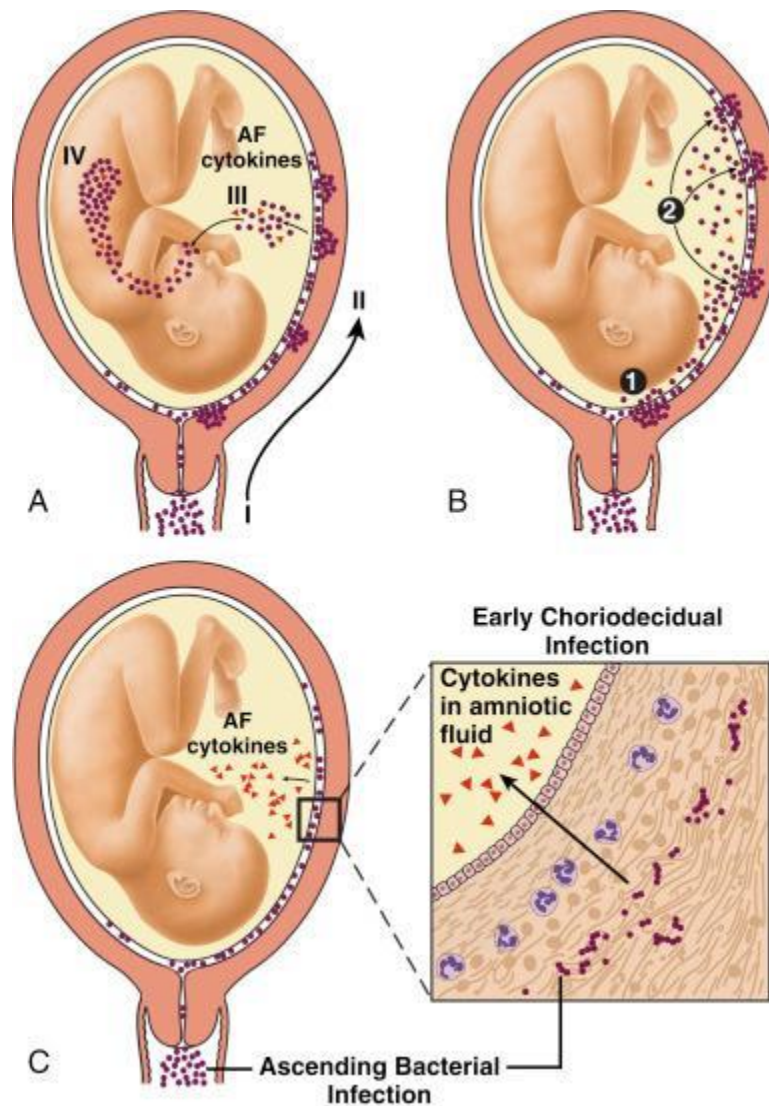


## Ectopic pregnancy



  
Cleveland  
Clinic  
©2023

**Fertilized egg develops  
outside of the uterus**



#### 4. Clinical Manifestations

##### UTIs:

- Dysuria
- Frequency
- Urgency

##### Genital Infections:

- Vaginal discharge
- Itching
- Pelvic pain

##### Severe Cases:

- Fever
- Infertility
- Chronic pelvic pain

#### 5. Diagnosis and Management

##### Diagnosis:

- Laboratory testing (urine, swabs, PCR)
- Imaging (in complicated cases)

##### Treatment:

- Antibiotics (for bacterial infections)



- Antifungals (for candidiasis)
- Antiviral therapy (for viral infections)

**Prevention:**

- Safe sexual practices
- Regular screening
- Hygiene education

**DISCUSSION**

Urinary and genital infections significantly affect women's reproductive health. Many infections are asymptomatic, leading to delayed diagnosis and increased complications.

Early detection and treatment are essential to prevent long-term consequences such as infertility and chronic pelvic pain. Public health strategies should focus on education, screening, and access to healthcare services.

A multidisciplinary approach involving gynecologists, infectious disease specialists, and primary care providers is recommended.

**CONCLUSION**

Urinary and genital tract infections are common in women and have a profound impact on reproductive health. They can lead to serious complications if left untreated. Early diagnosis, proper treatment, and preventive strategies are essential to reduce morbidity and improve reproductive outcomes.

**REFERENCES**

1. World Health Organization (2022). *Sexually transmitted infections report*.
2. Hooton TM. (2012). UTIs in women. *New England Journal of Medicine*.
3. Workowski KA, Bolan GA. (2015). STI treatment guidelines. *CDC*.
4. Schwebke JR. (2014). Bacterial vaginosis. *Clinical Microbiology Reviews*.
5. Sobel JD. (2016). Vulvovaginal candidiasis. *Lancet*.
6. Wiesenfeld HC. (2012). PID overview. *New England Journal of Medicine*.
7. Brunham RC et al. (2015). Chlamydia complications. *Nature Reviews Microbiology*.
8. Torrone E et al. (2018). STI epidemiology.
9. CDC (2021). STD treatment guidelines
10. Stamm WE. (2001). UTIs pathogenesis